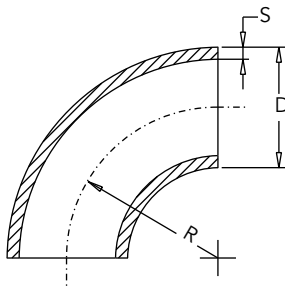
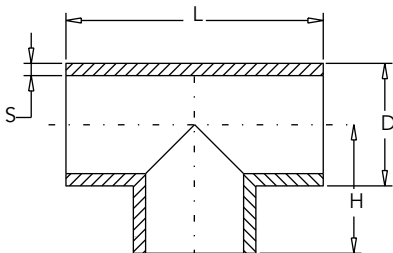


ART. 201 CURVE IN ACCIAIO INOX A 90° CON DIMENSIONI ISO



| DN | Ø | D | R | S = 1,5 mm | | S = 2 mm | | S = 3 mm | |
|-----|--------|-------|-------|------------|------|----------|------|----------|------|
| | | | | A304 | A316 | A304 | A316 | A304 | A316 |
| - | 1/4" | 13,5 | 20,5 | | | | | | |
| 10 | 3/8" | 17,2 | 28,5 | | | | | | |
| 15 | 1/2" | 21,3 | 31,8 | | | | | | |
| 20 | 3/4" | 26,9 | 28,5 | | | | | | |
| 25 | 1" | 33,7 | 38 | | | | | | |
| 32 | 1 1/4" | 42,4 | 47,6 | | | | | | |
| 40 | 1 1/2" | 48,3 | 57,1 | | | | | | |
| 50 | 2" | 60,3 | 76,2 | | | | | | |
| 65 | 2 1/2" | 76,1 | 96 | | | | | | |
| 80 | 3" | 88,9 | 114,5 | | | | | | |
| - | 3 1/2" | 101,6 | 133,5 | | | | | | |
| 100 | 4" | 114,3 | 152,5 | | | | | | |
| 125 | 5" | 139,7 | 190,5 | | | | | | |
| 150 | 6" | 168,3 | 228,6 | | | | | | |
| 200 | 8" | 219,1 | 304,8 | | | | | | |
| 250 | 10" | 273,0 | 381 | | | | | | |
| | 12" | 323,9 | 457,2 | | | | | | |
| | 14" | 355,6 | 533,4 | | | | | | |
| | 16" | 406,4 | 609,6 | | | | | | |
| | 18" | 457,2 | 685,8 | | | | | | |
| | 20" | 508,0 | 762 | | | | | | |
| | 22" | 558,8 | 838,2 | | | | | | |
| | 24" | 609,6 | 914,4 | | | | | | |

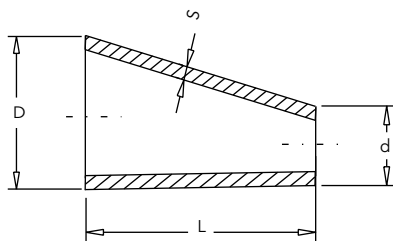
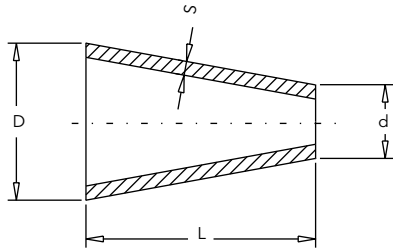
ART. 202 RACCORDI A "T" A SALDARE



| DN | Ø | D | H | L | S = 2 mm | | S = 3 mm | |
|-----|--------|-------|-------|-------|----------|------|----------|------|
| | | | | | A304 | A316 | A304 | A316 |
| - | 1/4" | 13,5 | 27,5 | 55 | | | | |
| 10 | 3/8" | 17,2 | 30 | 60 | | | | |
| 15 | 1/2" | 21,3 | 25,4 | 50,8 | | | | |
| 20 | 3/4" | 26,9 | 28,5 | 57,0 | | | | |
| 25 | 1" | 33,7 | 38,1 | 76,2 | | | | |
| 32 | 1 1/4" | 42,4 | 47,8 | 95,6 | | | | |
| 40 | 1 1/2" | 48,3 | 57,2 | 114,3 | | | | |
| 50 | 2" | 60,3 | 65,3 | 127 | | | | |
| 65 | 2 1/2" | 76,1 | 76,2 | 152,4 | | | | |
| 80 | 3" | 88,9 | 85,9 | 171,8 | | | | |
| - | 3 1/2" | 101,6 | 105 | 210 | | | | |
| 100 | 4" | 114,3 | 104,7 | 209,4 | | | | |
| 125 | 5" | 139,7 | 129 | 248 | | | | |
| 150 | 6" | 168,3 | 143 | 286 | | | | |
| 200 | 8" | 219,1 | 178 | 356 | | | | |
| 250 | 10" | 273,0 | 216 | 432 | | | | |

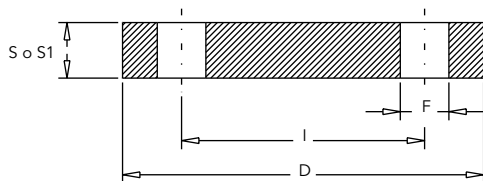
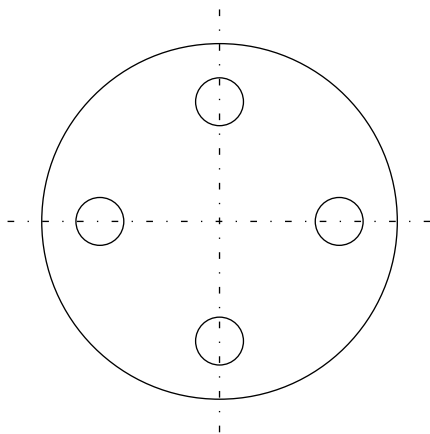
NOTA: Le zone evidenziate rappresentano la gamma di materiale reperibile presso il produttore
 Diametri, spessori e tipi di acciaio diversi possono essere forniti su richiesta

ART. 203-203E RIDUZIONI CONCENTRICHE ED ECCENTRICHE
RICAVATE DA TUBO ELETTRONUNITO O SENZA SALDATURA



| Ø | Ø | D | d | L | S = 2 mm | | S = 3 mm | |
|--------|--|-------|--|-------|----------|------|----------|------|
| | | | | | A304 | A316 | A304 | A316 |
| 3/4" | 3/8" | 26,9 | 17,2 21,3 | 38 | | | | |
| 1" | 1/2" 3/4" | 33,7 | 21,3 26,9 | 50,8 | | | | |
| 1 1/4" | 1/2" 3/4" 1" | 42,4 | 21,3 26,9 33,7 | 50,8 | | | | |
| 1 1/2" | 1/2" 3/4" 1" 1 1/4" | 48,3 | 21,3 26,9 33,7 42,4 | 63,5 | | | | |
| 2" | 3/4" 1" 1 1/4" 1 1/2" | 60,3 | 26,9 33,7 42,4 48,3 | 76,2 | | | | |
| 2 1/2" | 1" 1 1/4" 1 1/2" 2" | 76,1 | 33,7 42,4 48,3 60,3 | 88,9 | | | | |
| 3" | 1" 1 1/4" 1 1/2" 2" 2 1/2" | 88,9 | 33,7 42,4 48,3 60,3 76,1 | 88,9 | | | | |
| 4" | 1" 1 1/4" 1 1/2" 2" 2 1/2" 3" | 114,3 | 33,7 42,4 48,3 60,3 76,1 88,9 | 101,6 | | | | |

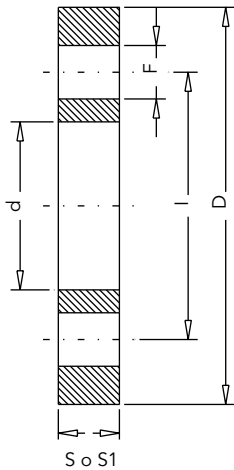
ART. 205 FLANGE PIANE CIECHE IN ACCIAIO INOX
UNI 6092/93



| PN 10/16 | | | | | | | A304 | A316 |
|----------|-----|-----|----|----|---------|----|------|------|
| DN | D | I | S | SI | n° fori | F | | |
| 10 | 90 | 60 | 12 | - | 4 | 14 | | |
| 15 | 95 | 65 | 12 | 8 | 4 | 14 | | |
| 20 | 105 | 75 | 14 | 8 | 4 | 14 | | |
| 25 | 115 | 85 | 14 | 10 | 4 | 14 | | |
| 32 | 140 | 100 | 16 | 10 | 4 | 18 | | |
| 40 | 150 | 110 | 16 | 10 | 4 | 18 | | |
| 50 | 165 | 125 | 18 | 10 | 4 | 18 | | |
| 65 | 185 | 145 | 18 | 10 | 4 | 18 | | |
| 80 | 200 | 160 | 20 | 10 | 4/8 | 18 | | |
| 100 | 220 | 180 | 22 | 12 | 8 | 18 | | |
| 125 | 250 | 210 | 24 | 12 | 8 | 18 | | |
| 150 | 285 | 240 | 24 | 12 | 8 | 22 | | |
| 200 | 340 | 295 | 26 | 14 | 8/12 | 22 | | |

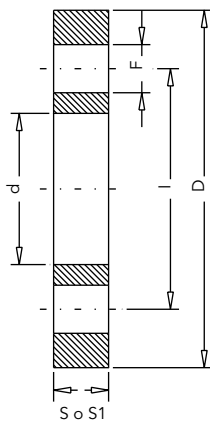
NOTA: Le zone evidenziate rappresentano la gamma di materiale reperibile presso il produttore
Diametri, spessori e tipi di acciaio diversi possono essere forniti su richiesta

ART. 206 FLANGE PIANE IN ACCIAIO INOX
 UNI 2276



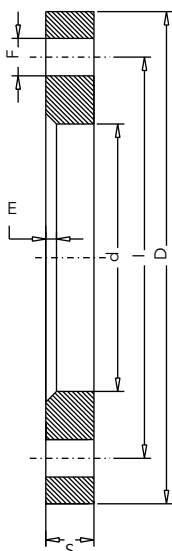
| PN 6 | | | | | | | | |
|------|-----|-------|-----|----|----|---------|----|--|
| DN | D | d | I | S | S1 | n° fori | F | |
| 10 | 75 | 17,5 | 50 | 10 | - | 4 | 11 | |
| 15 | 80 | 22 | 55 | 10 | 8 | 4 | 11 | |
| 20 | 90 | 27,5 | 65 | 12 | 8 | 4 | 11 | |
| 25 | 100 | 34 | 75 | 12 | 8 | 4 | 11 | |
| 32 | 120 | 43 | 90 | 14 | 8 | 4 | 14 | |
| 40 | 130 | 49 | 100 | 14 | 8 | 4 | 14 | |
| 50 | 140 | 61,5 | 110 | 14 | 10 | 4 | 14 | |
| 65 | 160 | 77 | 130 | 14 | 10 | 4 | 14 | |
| 80 | 190 | 90 | 150 | 16 | 10 | 4 | 18 | |
| 100 | 210 | 115,5 | 170 | 16 | 10 | 4 | 18 | |
| 125 | 240 | 141 | 200 | 18 | 12 | 8 | 18 | |
| 150 | 265 | 170 | 225 | 20 | 12 | 8 | 18 | |
| 200 | 320 | 221 | 280 | 22 | 12 | 8 | 18 | |

ART. 207 FLANGE PIANE IN ACCIAIO INOX
 UNI 2277/78



| PN 10/16 | | | | | | | | |
|----------|-----|-------|-----|----|----|---------|----|--|
| DN | D | d | I | S | S1 | n° fori | F | |
| 10 | 90 | 17,5 | 60 | 12 | - | 4 | 14 | |
| 15 | 95 | 22 | 65 | 12 | 8 | 4 | 14 | |
| 20 | 105 | 27,5 | 75 | 14 | 8 | 4 | 14 | |
| 25 | 115 | 34 | 85 | 14 | 10 | 4 | 14 | |
| 32 | 140 | 43 | 100 | 16 | 10 | 4 | 18 | |
| 40 | 150 | 49 | 110 | 16 | 10 | 4 | 18 | |
| 50 | 165 | 61,5 | 125 | 18 | 10 | 4 | 18 | |
| 65 | 185 | 77 | 145 | 18 | 10 | 4 | 18 | |
| 80 | 200 | 90 | 160 | 20 | 10 | 4/8 | 18 | |
| 100 | 220 | 115,5 | 180 | 22 | 12 | 8 | 18 | |
| 125 | 250 | 141 | 210 | 24 | 12 | 8 | 18 | |
| 150 | 285 | 170 | 240 | 24 | 12 | 8 | 22 | |
| 200 | 340 | 221 | 295 | 26 | 14 | 8/12 | 22 | |

ART. 208 FLANGE PER CARTELLE
 UNI 6089 - DIN 2642

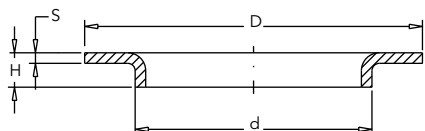


| PN 10 | | | | | | | | |
|-------|--------|------|-----|-----|----|---------|----|----|
| DN | D | d | I | S | E | n° fori | F | |
| 10 | 3/8" | 90 | 19 | 60 | 12 | 4 | 4 | 14 |
| 15 | 1/2" | 95 | 24 | 65 | 12 | 4 | 4 | 14 |
| 20 | 3/4" | 105 | 30 | 75 | 12 | 4 | 4 | 14 |
| 25 | 1" | 115 | 36 | 85 | 12 | 4 | 4 | 14 |
| 32 | 1 1/4" | 140 | 46 | 100 | 16 | 4 | 4 | 18 |
| 40 | 1 1/2" | 150 | 54 | 110 | 16 | 4 | 4 | 18 |
| 50 | 2" | 165 | 65 | 125 | 16 | 4 | 4 | 18 |
| 65 | 2 1/2" | 185 | 81 | 145 | 16 | 4 | 4 | 18 |
| 80 | 3" | 200 | 94 | 160 | 16 | 5 | 8 | 18 |
| 100 | 4" | 220 | 119 | 180 | 18 | 5 | 8 | 18 |
| 125 | 5" | 250 | 144 | 210 | 18 | 5 | 8 | 18 |
| 150 | 6" | 285 | 173 | 240 | 18 | 5 | 8 | 22 |
| 175 | 7" | 315 | 199 | 270 | 20 | 5 | 8 | 2 |
| 200 | 8" | 340 | 225 | 295 | 20 | 5 | 8 | 22 |
| 250 | 10" | 395 | 279 | 350 | 22 | 5 | 12 | 22 |
| 300 | 12" | 445 | 329 | 400 | 22 | 5 | 12 | 22 |
| 350 | 14" | 505 | 362 | 460 | 22 | 5 | 16 | 22 |
| 400 | 16" | 565 | 413 | 515 | 25 | 6 | 16 | 25 |
| 500 | 20" | 670 | 517 | 620 | 28 | 6 | 20 | 25 |
| 600 | 24" | 780 | 620 | 725 | 30 | 6 | 20 | 30 |
| 700 | 28" | 895 | 721 | 840 | 32 | 6 | 24 | 30 |
| 800 | 32" | 1015 | 824 | 950 | 36 | 7 | 24 | 33 |

ADATTE PER TUBI ISO R64 MATERIALE: GAISI 12CuFe

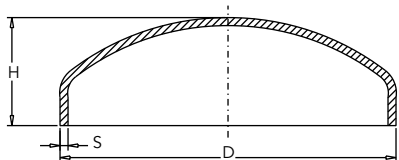
NOTA: Le zone evidenziate rappresentano la gamma di materiale reperibile presso il produttore
 Diametri, spessori e tipi di acciaio diversi possono essere forniti su richiesta

ART. 209 BORDI D'APPOGGIO (CARTELLE)



| Ø | D | d | H | S = 2 mm | | S = 3 mm | |
|--------|-----|-------|----|----------|------|----------|------|
| | | | | A304 | A316 | A304 | A316 |
| 3/8" | 40 | 17,2 | 6 | | | | |
| 1/2" | 45 | 21,3 | 6 | | | | |
| 3/4" | 58 | 26,9 | 6 | | | | |
| 1" | 68 | 33,7 | 8 | | | | |
| 1 1/4" | 78 | 42,4 | 10 | | | | |
| 1 1/2" | 88 | 48,3 | 10 | | | | |
| 2" | 102 | 60,3 | 12 | | | | |
| 2 1/2" | 126 | 76,1 | 12 | | | | |
| 3" | 139 | 88,9 | 12 | | | | |
| 3 1/2" | 158 | 101,6 | 12 | | | | |
| 4" | 158 | 114,3 | 14 | | | | |
| 5" | 188 | 139,7 | 14 | | | | |
| 6" | 212 | 168,3 | 16 | | | | |
| 8" | 270 | 219,1 | 18 | | | | |
| 10" | 320 | 273,2 | 20 | | | | |
| 12" | 370 | 323,9 | 19 | | | | |
| 14" | 430 | 355,6 | 21 | | | | |

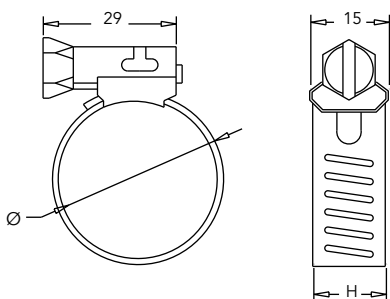
ART. 210 FONDI BOMBATI



| DN | Ø | D | H | S = 2 mm | | S = 3 mm | |
|-----|--------|-------|----|----------|------|----------|------|
| | | | | A304 | A316 | A304 | A316 |
| 10 | 3/8" | 17,2 | 13 | | | | |
| 15 | 1/2" | 21,3 | 15 | | | | |
| 20 | 3/4" | 26,9 | 11 | | | | |
| 25 | 1" | 33,7 | 13 | | | | |
| 32 | 1 1/4" | 42,4 | 17 | | | | |
| 40 | 1 1/2" | 48,3 | 17 | | | | |
| 50 | 2" | 60,3 | 21 | | | | |
| 65 | 2 1/2" | 76,1 | 27 | | | | |
| 80 | 3" | 88,9 | 28 | | | | |
| - | 3 1/2" | 101,6 | 25 | | | | |
| 100 | 4" | 114,3 | 31 | | | | |
| 125 | 5" | 139,7 | 35 | | | | |
| 150 | 6" | 168,3 | 42 | | | | |
| 200 | 8" | 219,1 | 50 | | | | |
| 250 | 10" | 273 | 60 | | | | |
| - | 14" | 355,6 | 90 | | | | |
| - | 16" | 406,4 | 96 | | | | |

NOTA: Le zone evidenziate rappresentano la gamma di materiale reperibile presso il produttore
Diametri, spessori e tipi di acciaio diversi possono essere forniti su richiesta

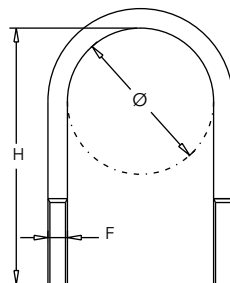
ART. 213 FASCETTA STRINGITUBO



| Per tubo Ø | H |
|------------|----|
| 8 ÷ 14 | 9 |
| 10 ÷ 22 | 14 |
| 11 ÷ 25 | 14 |
| 13 ÷ 28 | 14 |
| 13 ÷ 32 | 14 |
| 19 ÷ 40 | 14 |
| 19 ÷ 44 | 14 |
| 26 ÷ 50 | 14 |
| 34 ÷ 57 | 14 |
| 40 ÷ 64 | 14 |
| 29 ÷ 76 | 14 |
| 42 ÷ 90 | 14 |



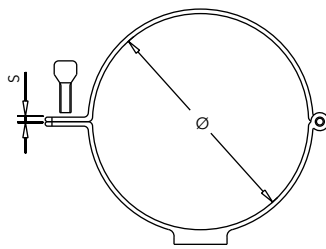
ART. 214 CAVALLOTTO REGGITUBO



| Ø | D | H | F |
|--------|------|-----|-----|
| 3/8" | 19,5 | 41 | M6 |
| 1/2" | 22,5 | 45 | M6 |
| 3/4" | 28,5 | 50 | M6 |
| 1" | 34,5 | 57 | M6 |
| 1 1/4" | 43,5 | 66 | M6 |
| 1 1/2" | 51 | 77 | M8 |
| 2" | 64 | 89 | M8 |
| 2 1/2" | 80 | 105 | M8 |
| 3" | 93 | 117 | M8 |
| 3 1/2" | 100 | 134 | M8 |
| 4" | 116 | 146 | M8 |
| 5" | 142 | 172 | M8 |
| 6" | 171 | 205 | M10 |
| 8" | 222 | 257 | M10 |
| 10" | 276 | 311 | M10 |

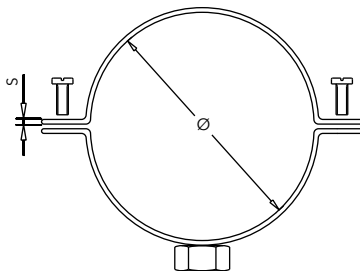


ART. 215 COLLARE STRINGITUBO A CERNIERA CON MANICOTTO DA 1/2"



| Ø | Ø |
|-------|-----|
| 21,3 | 76 |
| 25,4 | 80 |
| 28 | 89 |
| 30-32 | 101 |
| 38 | 114 |
| 40-42 | 129 |
| 48 | 139 |
| 50-52 | 153 |
| 60 | 168 |
| 70 | |

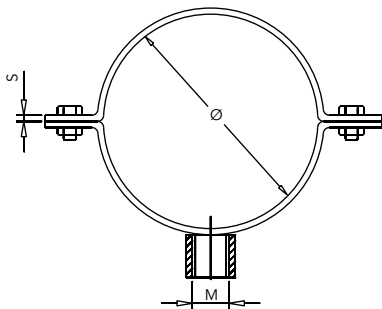
ART. 216 COLLARE INOX IN DUE PEZZI CON DADO



| Ø | Per tubo Ø | S x L (mm) | Dado |
|--------|------------|------------|------|
| 3/8" | 16 ÷ 24 | 20 x 2 | M8 |
| 1/2" | 20 ÷ 26 | 20 x 2 | M8 |
| 3/4" | 25 ÷ 31 | 20 x 2,5 | M8 |
| 1" | 31 ÷ 36 | 20 x 2,5 | M8 |
| 1 1/4" | 39 ÷ 42 | 20 x 2,5 | M8 |
| 1 1/2" | 45 ÷ 51 | 20 x 2,5 | M8 |
| 2" | 58 ÷ 63 | 20 x 2,5 | M8 |
| 2 1/2" | 72 ÷ 79 | 30 x 2,5 | M10 |
| 3" | 84 ÷ 90 | 30 x 2,5 | M10 |
| 3 1/2" | 97 ÷ 103 | 30 x 2,5 | M10 |
| 4" | 110 ÷ 116 | 30 x 2,5 | M10 |
| 5" | 136 ÷ 142 | 40 x 3 | 1/2" |
| 6" | 165 ÷ 170 | 40 x 3 | 1/2" |

L= LARGHEZZA PIATTINA

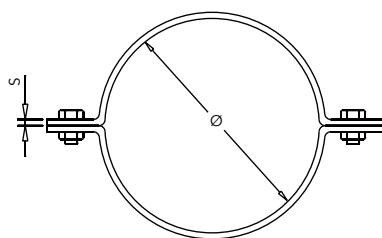
ART. 217 COLLARE INOX IN DUE PEZZI CON MANICOTTO



| Ø | S | L | M |
|-----|-----|----|------|
| 104 | 2,5 | 40 | 1/2" |
| 114 | 2,5 | 40 | 1/2" |
| 124 | 2,5 | 40 | 1/2" |
| 129 | 2,5 | 40 | 1/2" |
| 139 | 2,5 | 40 | 1/2" |
| 154 | 2,5 | 40 | 1/2" |
| 168 | 2,5 | 40 | 1/2" |
| 204 | 2,5 | 40 | 1/2" |
| 219 | 2,5 | 40 | 1/2" |

L= LARGHEZZA PIATTINA

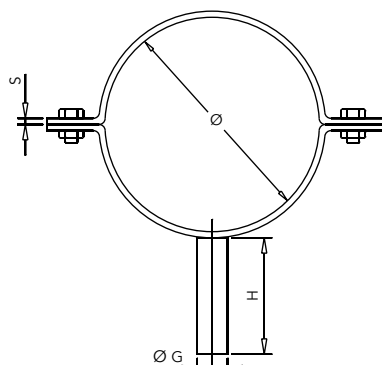
ART. 218 COLLARE INOX IN DUE PEZZI



| Ø | S | L | Ø | S | L | Ø | S | L |
|-------|---|----|-------|---|----|-------|---|----|
| 12 | 3 | 30 | 60,3 | 3 | 30 | 139,7 | 3 | 30 |
| 18 | 3 | 30 | 63,5 | 3 | 30 | 153 | 3 | 30 |
| 21,3 | 3 | 30 | 70 | 3 | 30 | 168,3 | 3 | 30 |
| 25,4 | 3 | 30 | 76,1 | 3 | 30 | 204 | 3 | 30 |
| 26,9 | 3 | 30 | 80 | 3 | 30 | 219,1 | 3 | 30 |
| 28 | 3 | 30 | 85 | 3 | 30 | 254 | 3 | 30 |
| 34 | 3 | 30 | 88,9 | 3 | 30 | 273 | 3 | 30 |
| 40 | 3 | 30 | 101,6 | 3 | 30 | 306 | 3 | 30 |
| 42,4 | 3 | 30 | 104 | 3 | 30 | 355 | 3 | 30 |
| 48,3 | 3 | 30 | 114,3 | 3 | 30 | 406 | 3 | 30 |
| 51/52 | 3 | 30 | 129 | 3 | 30 | 508 | 3 | 30 |

L= LARGHEZZA PIATTINA

ART. 219 COLLARE INOX IN DUE PEZZI CON GAMBO



| Ø | S | L | ØG | H | Ø | S | L | ØG | H | Ø | S | L | ØG | H |
|-------|---|----|----|----|-------|---|----|----|----|-------|---|----|----|----|
| 12 | 3 | 30 | 6 | 60 | 60,3 | 3 | 30 | 12 | 60 | 139,7 | 3 | 30 | 15 | 60 |
| 18 | 3 | 30 | 8 | 60 | 63,5 | 3 | 30 | 12 | 60 | 153 | 3 | 30 | 15 | 60 |
| 21,3 | 3 | 30 | 8 | 60 | 70 | 3 | 30 | 12 | 60 | 168,3 | 3 | 30 | 15 | 60 |
| 25,4 | 3 | 30 | 8 | 60 | 76,1 | 3 | 30 | 12 | 60 | 204 | 3 | 30 | 15 | 60 |
| 26,9 | 3 | 30 | 8 | 60 | 80 | 3 | 30 | 15 | 60 | 219,1 | 3 | 30 | 15 | 60 |
| 28 | 3 | 30 | 8 | 60 | 85 | 3 | 30 | 15 | 60 | 254 | 3 | 30 | 15 | 60 |
| 34 | 3 | 30 | 10 | 60 | 88,9 | 3 | 30 | 15 | 60 | 273 | 3 | 30 | 15 | 60 |
| 40 | 3 | 30 | 10 | 60 | 101,6 | 3 | 30 | 15 | 60 | 306 | 3 | 30 | 15 | 60 |
| 42,4 | 3 | 30 | 10 | 60 | 104 | 3 | 30 | 15 | 60 | 355 | 3 | 30 | 15 | 60 |
| 48,3 | 3 | 30 | 10 | 60 | 114,3 | 3 | 30 | 15 | 60 | 406 | 3 | 30 | 15 | 60 |
| 51/52 | 3 | 30 | 12 | 60 | 129 | 3 | 30 | 15 | 60 | 508 | 3 | 30 | 15 | 60 |

L= LARGHEZZA PIATTINA