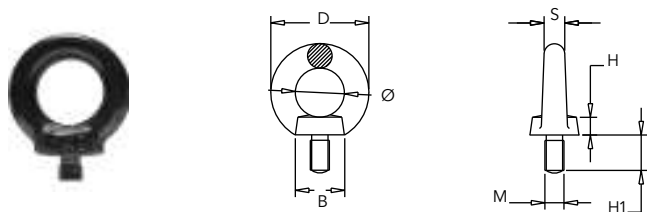
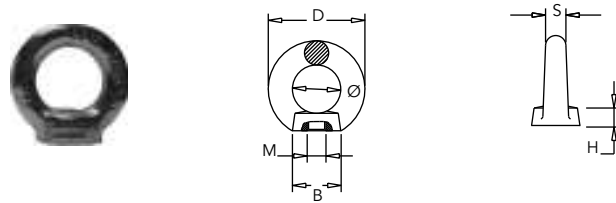


ART. 853 GOLFARI MASCHI (Aisi304 e Aisi316)
DIN 580



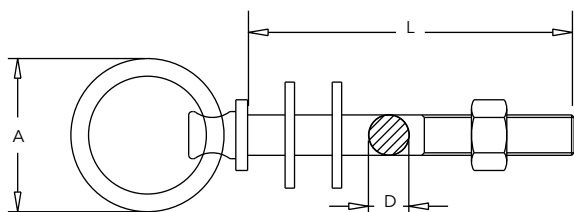
M	D	Ø	B	H	H1	S	S.W.L. Kg
M8	36	20	20	6	13	8	300
M10	45	25	25	8	17	10	500
M12	54	30	30	10	20,5	12	800
M14	54	30	30	10	20,5	12	1100
M16	63	35	35	12	27	14	1500
M20	72	40	40	14	30	16	2400
M24	90	50	50	18	36	20	3600

ART. 854 GOLFARI FEMMINA (Aisi304 e Aisi316)
DIN 582



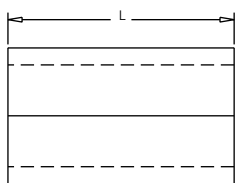
M	D	Ø	B	H	S	S.W.L. Kg
M8	36	20	20	8,5	8	300
M10	45	25	25	10	10	500
M12	54	30	30	11	12	800
M14	54	30	30	11	12	1100
M16	63	30	35	13	14	1500
M20	72	40	40	16	16	2400
M24	90	50	50	20	20	3600

ART. 856 ANELLI SNODATI



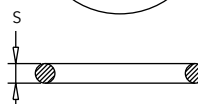
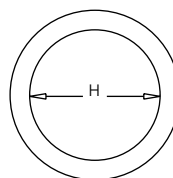
Misura	A	D	L
M10 x 85	44	10	85
M10 x 100	44	10	100

ART. 859 MANICOTTI IN RAME
PER PRESSATURE



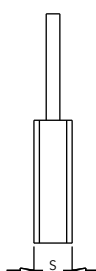
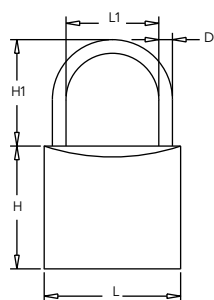
Tipo	D	L
1	2,6	9,5
2	3,1	10,8
3	4,4	14,3
4	4,9	16,2
5	6,2	18
6	6,8	21,7
7	7,7	28,6
8	9,5	28,8
9	11,5	33
10	15,3	48

ART. 864 ANELLI CIRCOLARI



mm	S	H	8 x 50	8	50
5 x 25	5	25	8 x 55	8	55
5 x 30	5	30	8 x 60	8	60
5 x 35	5	35	8 x 65	8	65
5 x 40	5	40	8 x 70	8	70
5 x 45	5	45	8 x 75	8	75
5 x 50	5	50	9 x 50	9	50
6 x 30	6	30	9 x 60	9	60
6 x 35	6	35	9 x 70	9	70
6 x 40	6	40	9 x 80	9	80
6 x 45	6	45	10 x 50	10	50
6 x 50	6	50	10 x 60	10	60
6 x 55	6	55	10 x 70	10	70
8 x 60	6	60	10 x 80	10	80
8 x 40	8	40	10 x 90	10	90
8 x 45	8	45	10 x 100	10	100

ART. 900 - 901 LUCCHETTI



L x H x S	H1	L1	D
30 x 28 x 13	17	16	5
40 x 33 x 15	23	22	6,3
50 x 41 x 17	30	28	8
60 x 43 x 19	35	35	9,5
40 x 33 x 15	42	22	6,3
50 x 41 x 17	49	28	8

2 CHIAVI IN DOTAZIONE
ARCO = INOX
MOLLE = INOX
CORPO = OTTONE CROMATO

L x H x S	H1	L1	D
30 x 27 x 13	15	15,7	5
40 x 32 x 15	20	23	6
40 x 32 x 15	40	23	6
50 x 40 x 17	55	30	8

2 CHIAVI IN DOTAZIONE
ARCO = INOX
MOLLE = BRONZO FOSFOROSO E INOX
CORPO = OTTONE NICHELATO E CROMATO