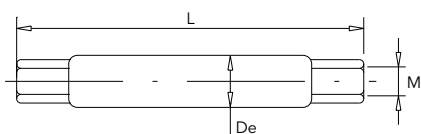
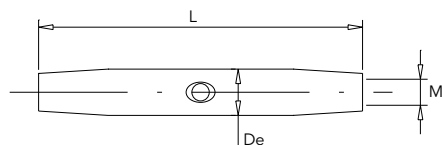


ART. 1001 CANAULA STANDARD



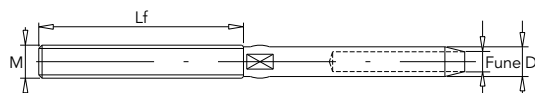
M	De	L
M5	9	60
M6	10	73
M8	13	92
M10	16,5	102
M12	20	126
M14	21,5	145
M16	25,5	165
M18	29	190
M20	32	215

ART. 1002 CANAULA CONICA CON FORO “BEN RIFINITA”



M	De	L
M6	9,5	81
M8	13	101

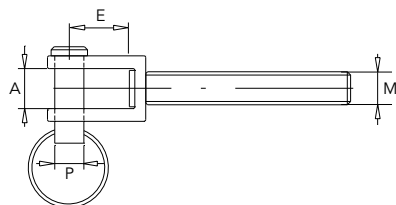
ART. 1003 TERMINALI FILETTATI “RIBASSATI”
(SPECIFICARE SE FILETTATI DS O SN)



TERMINALI CON FILETTATURE E Ø DI FUNE MAGGIORI
POSSONO ESSERE FORNITI SU RICHIESTA

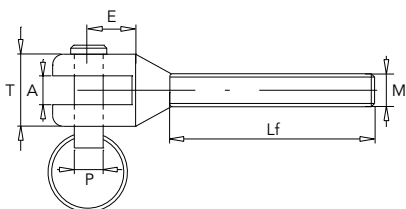
Fune	M	Lf	D
ø 3	M5	30	6
ø 3	M6	40	6,3
ø 4	M6	40	6
ø 4	M6	40	6,3
ø 5	M6	40	9
ø 5	M8	50	9
ø 6	M8	50	9
ø 6	M10	60	9
ø 6	M10	60	10

ART. 1004 TIRANTE A FORCELLA SALDATA CON GAMBO FILETTATO
(SPECIFICARE SE FILETTATO DS O SN)



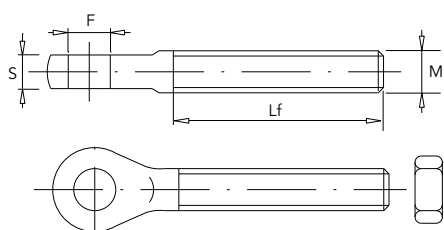
M	P	A	E
M5	5	8	12
M6	6	8	13
M8	8	10	16
M10	10	12	19

ART. 1005 TIRANTE A FORCELLA FRESATA CON GAMBO FILETTATO
(SPECIFICARE SE FILETTATO DS O SN)



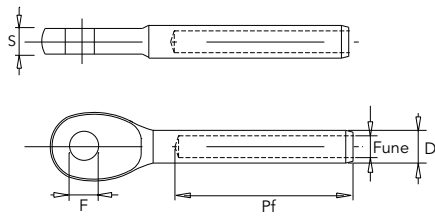
M	P	A	T	Lf
M5	4	5	11	30
M6	5	5	13	40
M8	6	7	17	48
M10	8	8	18	55
M12	10	10	21	65

ART. 1006 TIRANTE AD OCCHIO FILETTATO, INOX AISI 316
(SPECIFICARE SE FILETTATO DS O SN)



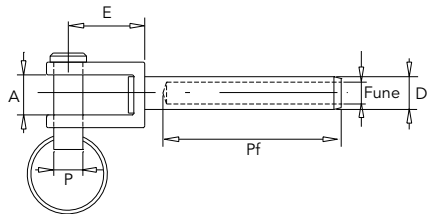
M	F	S	Lf
M5	5	4	25
M6	5,5	4	33
M8	6,5	6	44
M10	8,5	7	54
M12	10,5	9	64

ART. 1007 TERMINALI AD OCCHIO “RIBASSATI”, INOX AISI 316



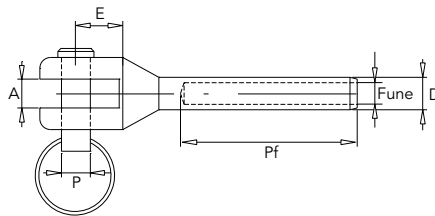
Fune	F	S	D
ø 3	5,5	4	6
ø 3	5,5	4	6,3
ø 4	5,5	4	6
ø 4	5,5	4	6,3
ø 5	5,5	4	9
ø 5	6,5	6	8
ø 6	8,5	7	9
ø 6	8,5	7	10

ART. 1008 TERMINALI A FORCELLA SALDATA “RIBASSATI”



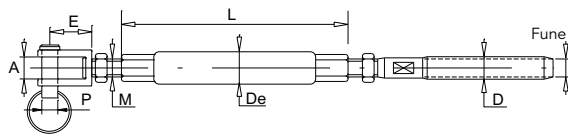
Fune	P	A	D
ø 3	5	8	6,3
ø 4	6	8	7,5
ø 5	8	10	9
ø 6	10	12	12,5
ø 8	11	12	12,5

ART. 1009 TERMINALI A FORCELLA FRESATA “RIBASSATI”



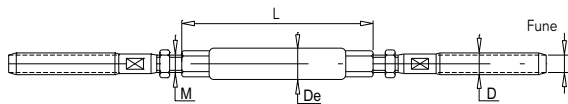
Fune	P	A	D	T
ø 3	5	6	6,3	10
ø 4	5	6	6	10
ø 4	5	6	6,3	10
ø 5	6	8	8	13
ø 5	6	8	9	13
ø 6	6	8	9	13
ø 6	8	8	9	17

ART. 1010 TENDITORI FORCELLA SALDATA/PRESSARE “RIBASSATI”



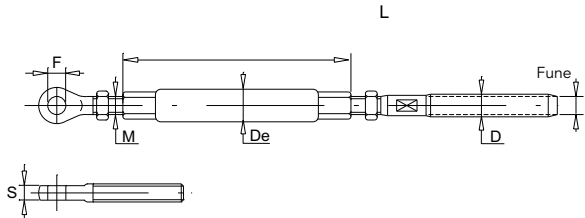
Fune	M	P	A	D
ø 3	M5	4	7	5,5
ø 4	M6	5	8	6,3
ø 5	M8	6	8	7,5
ø 6	M10	8	10	9

ART. 1011 TENDITORI PRESSARE/PRESSARE, INOX AISI 316



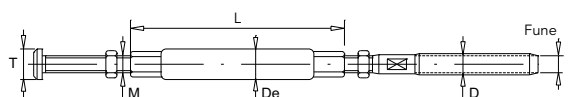
Fune	M	De	D
ø 3	M6	10	6
ø 3	M6	10	6,3
ø 4	M6	10	6
ø 4	M6	10	6,3
ø 5	M8	13	8
ø 5	M8	13	9
ø 6	M10	16,5	9
ø 6	M10	16,5	10

ART. 1012 TENDITORI OCCHIO/PRESSARE, INOX AISI 316



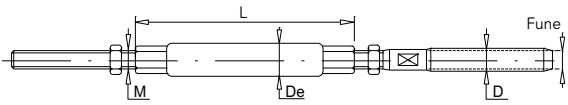
Fune	M	F	S	D
ø 3	M5	5,5	4	6
ø 3	M6	5,5	4	6,3
ø 4	M6	5,5	4	6
ø 4	M6	5,5	4	6,3
ø 5	M8	6,5	6	8
ø 5	M8	6,5	6	9
ø 6	M10	8,5	7	9
ø 6	M10	8,5	7	10

ART. 1013 TENDITORI A TESTA BATTENTE/PRESSARE “RIBASSATI”



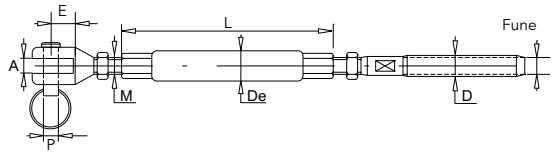
Fune	M	T	D
ø 3	M5	9	6,3
ø 4	M6	10,5	6
ø 4	M6	10,5	6,3
ø 5	M6	10,5	9
ø 5	M8	14	9
ø 6	M8	14	9
ø 6	M10	16	9
ø 6	M10	16	10

ART. 1014 TENDITORI ASTA FILETTATA/PRESSARE "RIBASSATI"
INOX AISI 316



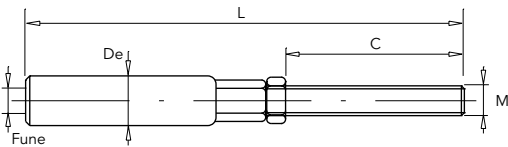
Fune	M	De	D
ø 3	M5	9	6
ø 3	M5	9	6,3
ø 4	M6	10	6
ø 4	M6	10	6,3
ø 5	M6	13	8
ø 5	M8	13	9
ø 6	M8	16,5	9
ø 6	M10	16,5	10

ART. 1015 TENDITORE FORCELLA FRESATA/PRESSARE "RIBASSATI"
INOX AISI 316



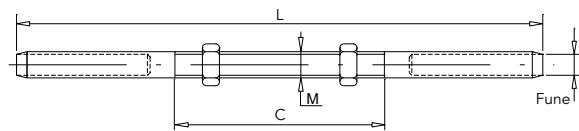
Fune	M	P	A	D	E
ø 3	M5	4	5	6	9
ø 3	M5	4	5	6,3	9
ø 4	M6	5	6	6	11
ø 4	M6	5	6	6,3	11
ø 5	M6	5	6	9	11
ø 5	M8	6	8	9	13
ø 6	M8	6	8	9	13
ø 6	M10	8	8	10	17

ART. 1016 TERMINALI FILETTATI MASCHI MANUALI LINEARI, INOX AISI 316



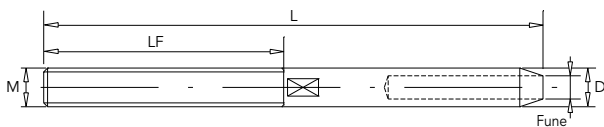
Fune	M	C	De	L
ø 3	M6	40	10	90
ø 4	M6	40	10	90
ø 5	M8	55	13	130
ø 6	M8	55	13	130

ART. 1017 TERMINALI DI FERMO FILETTATI ESTERNAMENTE



Fune	M	C	L
ø 3	M8	40	90
ø 4	M10	50	110
ø 5	M12	60	130

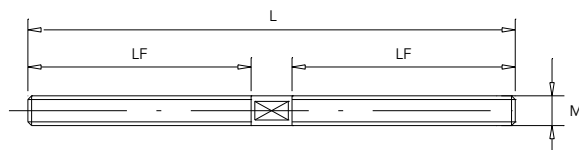
ART. 1018 TERMINALI FILETTATI "LINEARI", INOX AISI 316
(VALIDI SOLO PER FUNE 7x7 E 7x19)



Fune	M	D	LF
ø 5	M5	5,1	30
ø 6	M6	6,2	40
ø 8	M8	8,2	50

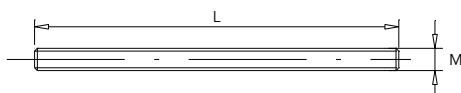
NOTA: IL DIAMETRO ESTERNO DOPO LA PRESSATURA E' SIMILE AL DIAMETRO DELLA FILETTATURA

ART. 1019 ASTA FILETTATA DOPPIA DESTRA / SINISTRA



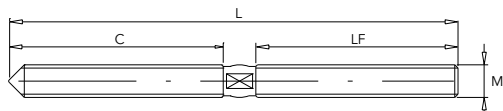
M	L	LF
M5	65	30
M6	65	30
M8	65	30
M10	85	40

ART. 1020 BARRETTA FILETTATA INTERAMENTE, INOX AISI 316



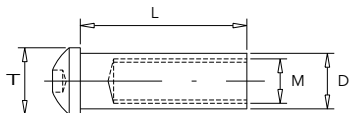
M	L	M	L
M5	60	M8	95
M6	70	M8	120
M6	85	M10	105

ART. 1021 ASTA FILETTATA DESTRA CON VITE A LEGNO / TASSELLI



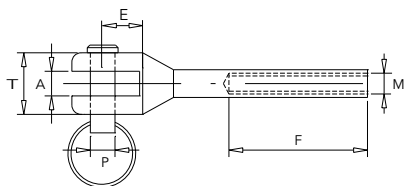
M	L	LF	C
M5	80	32	43
M6	90	35	50
M8	130	55	65
M10	150	55	75

ART. 1022 TIRANTE A TESTA BATTENTE FILETTATO FEMMINA, ESAGONO INCASSATO INOX AISI 304



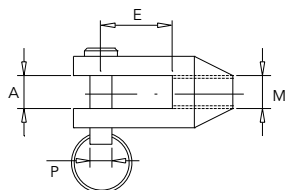
M	T	D	L
M6	10	8	26
M8	12	10	30
M10	14	12	34

ART. 1023 FORCELLA FRESATA FILETTATA FEMMINA, STANDARD, INOX AISI 316 (SPECIFICARE SE FILETTATA DS O SN)



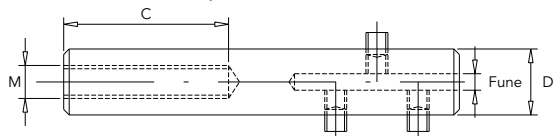
M	P	A	F
M6	5	5	25
M8	8	8	40
M10	10	10	50
M12	12	12	60
M16	14	14	80

ART. 1024 FORCELLA FRESATA FILETTATA INTERNAMENTE, INOX AISI 316



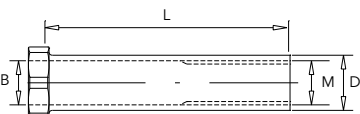
M	P	A	E
M5	4	5	11
M6	5	5	13
M8	6	7	15
M10	8	8	16
M12	10	10	20

ART. 1025 TERMINALI FILETTATI FEMMINA MANUALI CON GRANI (VALIDI SOLO PER FUNE 7x7 E 7x19)



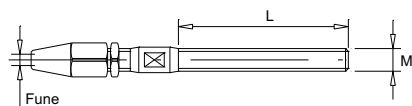
Fune	M	C	D	E
ø 3	M6	30	12	45
ø 4	M6	30	12	45
ø 5	M8	40	14	50
ø 6	M8	40	14	60

ART. 1026 TIRANTE A TESTA BATTENTE, FILETTATO FEMMINA, FORO PASSANTE



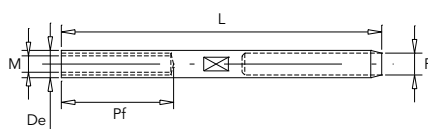
M	B	L	D
M5	5,3	30	7
M6	6,3	35	8
M8	8,3	40	10,5

ART. 1027 TERMINALI FILETTATI MASCHI MANUALI CONICI



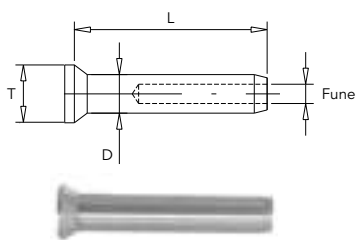
Fune	M	L
ø 3	M6	40
ø 4	M8	50
ø 5	M10	60
ø 6	M12	70
ø 7	M14	80
ø 8	M16	90

ART. 1028 TERMINALI FILETTATI FEMMINA "RIBASSATI", INOX AISI 316



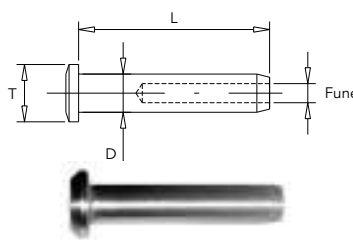
Fune	M	Pf	De	L
ø 3	M5	20	6,3	55
ø 4	M6	22	7,5	65
ø 5	M6	22	8	70
ø 5	M6	22	9	70
ø 6	M8	25	12,5	85
ø 6	M10	30	14	105
ø 8	M12	30	16	120

ART. 1029 TERMINALI A TESTA SVASATA



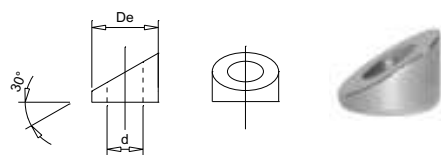
Fune	T	L	D
ø 3	9	30	6
ø 3	9	30	6,3
ø 4	9	30	6
ø 4	9	30	6,3
ø 4	9,5	35	7,5
ø 5	9,5	35	7,5
ø 5	12	36	7,5
ø 5	12	36	9
ø 6	14	41	9

ART. 1030 TERMINALI A TESTA BATTENTE



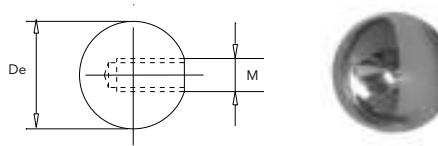
Fune	T	L	D
ø 3	9	18	5,5
ø 3	9	30	6
ø 4	9	30	6
ø 4	11	25	6,3
ø 5	13	28	7,5
ø 5	12	36	7,5
ø 5	12	36	9
ø 6	14	41	9

ART. 1031 RONDELLA INCLINATA A 30°



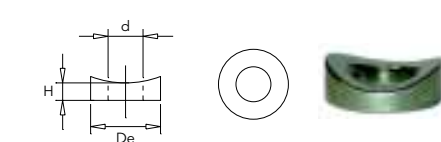
Filetto	De	d	C
M6	12	6,5	30°
M8	16	8,5	30°
M10	20	10,5	30°
M12	22	12,5	30°

ART. 1032 SFERA FILETTATA INTERNAMENTE



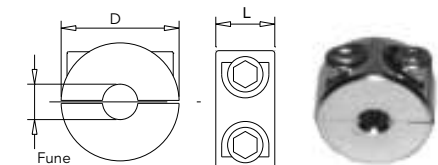
D	L
M6	15
M6	20
M6	25
M8	24

ART. 1033 RONDELLA DI APOGGIO SU TUBO



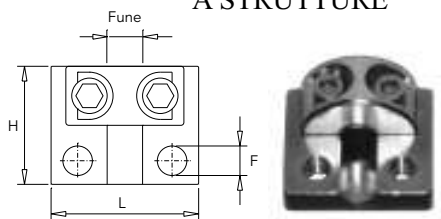
Filetto	Tubo	H	De
M5/M6	33,7	3	12
M8/M10	33,7	4	18
M5/M6	42,4	3	12
M8/M10	42,4	4	18

ART. 1034 RONDELLE DI FERMO SU FUNE



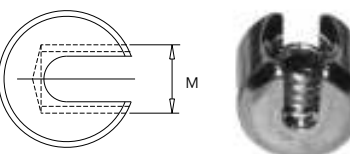
Fune	D	L
ø 3	16	10
ø 4	16	10
ø 5	20	10
ø 6	20	10

ART. 1035 PIASTRINA DI FERMO PER FISSAGGIO A STRUTTURE



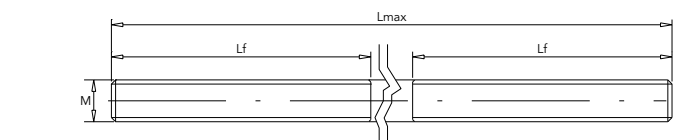
Fune	F	H	L
ø 3	M5	25	20
ø 4	M5	25	20
ø 5	M5	25	20
ø 6	M5	25	20

ART. 1036 CILINDRI DI FERMO AD UN GRANO



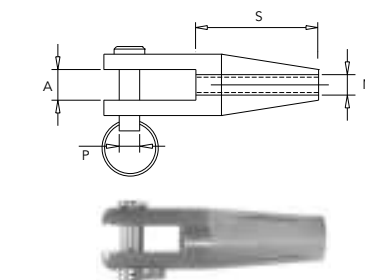
Fune	M	D	H
ø 1-2	M4	10	8
ø 3-4	M8	15	12
ø 5-6	M10	20	15
ø 8	M12	24	17

ART. 1037 ASTA A TONDINO PIENO FILETTATA ALLE ESTREMITA'



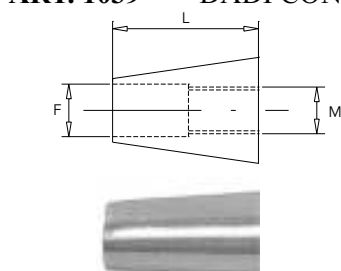
A	M	Lf	Lmax
ø 8	M8	45	3950
ø 10	M10	55	3950
ø 12	M12	70	3950
ø 16	M16	90	3950
ø 20	M20	105	2950

ART. 1038 FORCELLA FRESATA FILETTATA FEMMINA, TIPO LUNGO



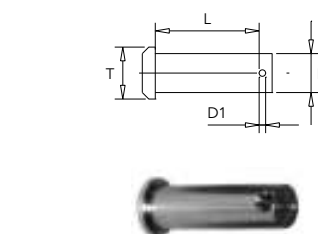
M	P	A	S
M8	8	8	40
M10	10	10	50
M12	12	12	60
M16	16	14	80
M20	20	18	95

ART. 1039 DADI CONICI LUNGI PER FORCELLE



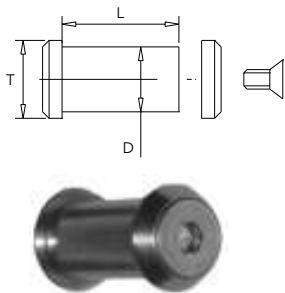
A	B	L
M10	11	18
M12	13	22
M16	18	28
M20	22	35

ART. 1040 PERNO PER FORCELLE



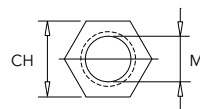
D	T	L	D1
ø 5	7	13,5	2
ø 6	8	17	2
ø 8	10	20	2,5
ø 10	12	23	2,5
ø 12	14	26	3
ø 14	16	38	3
ø 16	20	42	4
ø 19	22	45	4

ART. 1041 PERNO CON VITE E RONDELLA SVASATA



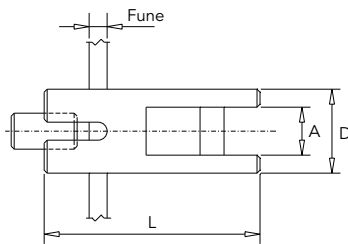
D	T	L
Ø 12	16	27
Ø 16	20	35
Ø 19	26	40
Ø 22	30	45
Ø 24	32	51

ART. 1042 DADI "RIBASSATI" DESTRI E SINISTRI



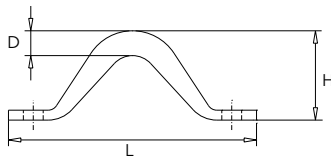
M	CH	M	CH
M6	10	M16	24
M8	13	M18	27
M10	17	M20	30
M12	19	M22	32
M14	22	M24	36

ART. 1043 FORCELLA FERMA FUNE PER FISSAGGIO PIANI



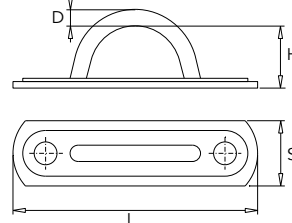
Fune	Pann.	A	D	L
Ø 3	Orizz.	6	14	35
Ø 3	Vert.	6	14	35

ART. 1044 CAVALLOTTO SEMPLICE



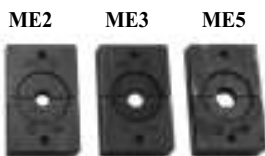
D	H	L
5	18	50
6	22	60
8	24	65

ART. 1045 CAVALLOTTO CON PIASTRINA



D	H	L	S
5	20	75	16
6	20	88	19
8	25	100	22

ART. 1046 PRESSA IDRAULICA MANUALE PER TERMINALI - 45 HT



Terminali	Talurit	Dim.	Peso
2,5	-	350mm x 120mm x 50mm	2,7 Kg
3	-		
4	-		
5	-		
6	-		

STAMPI DA INSERIRE ALL' INTERNO DELLA PINZA A SECONDA DEL DIAMETRO DA PRESSARE

MODELLO Pressetta oleodinamica manuale portatile (Ht45) per la pressatura di terminali e manicotti Talurit su funi di acciaio
VALIDA per funi per ringhiere, recinzioni, draglie ed elettricità
NON VALIDA per funi portanti (sartie, strallature,...)

CAMPO DI AZIONE Terminali: per funi da Ø 2mm fino a Ø 6mm
 Talurit: per funi da Ø 3 e 4 mm

TERMINALI Adatta a pressare i terminali con Ø esterno come da elenco

COMPOSIZIONE Unico corpo macchina con incorporate pompa a leva e cilindro, con stampi intercambiabili

MATRICI Ogni coppia di stampi è adatta ad un differente diametro esterno del gambo dei terminali:
 n.1 x Ø est. 5,5 mm (fune Ø 2-3 mm) - art. ME1
 n.1 x Ø est. 6,3 / 6 mm (fune Ø 3-4 mm) - art. ME2
 n.1 x Ø est. 7,5 mm (fune Ø 4-6 mm) - art. ME3
 n.1 x Ø est. 9,0 mm (fune Ø 5-6 mm) - art. ME5

PRESSATURA Pressate esagonali da effettuarsi in più riprese (n. 2/3 per ogni terminale)
FUNZIONAMENTO Manuale (tramite pompa oleodinamica a leva)

DIMENSIONI 350 x 120 x 50 mm
PESO Kg 2,5

Nota: possibilità di affitto giornaliero